





Introducing Duo.

The Higher Energy Analogue System.



We set out to design the definitive way to explore all of NEC's high energy video game history. An all-in-one reimaging of perhaps the most under appreciated video game systems of all time. Analogue Duo is compatible with nearly every NEC system and game format ever made. TurboGrafx-16. PC Engine. SuperGrafx. TurboGrafx CD. PC Engine CD-ROM². Super Arcade CD-Rom². 1080p. Zero lag. Bluetooth. 2.4g.

Completely engineered in FPGA.
No emulation.

Duo does it all.
Hucards & CD-ROM².



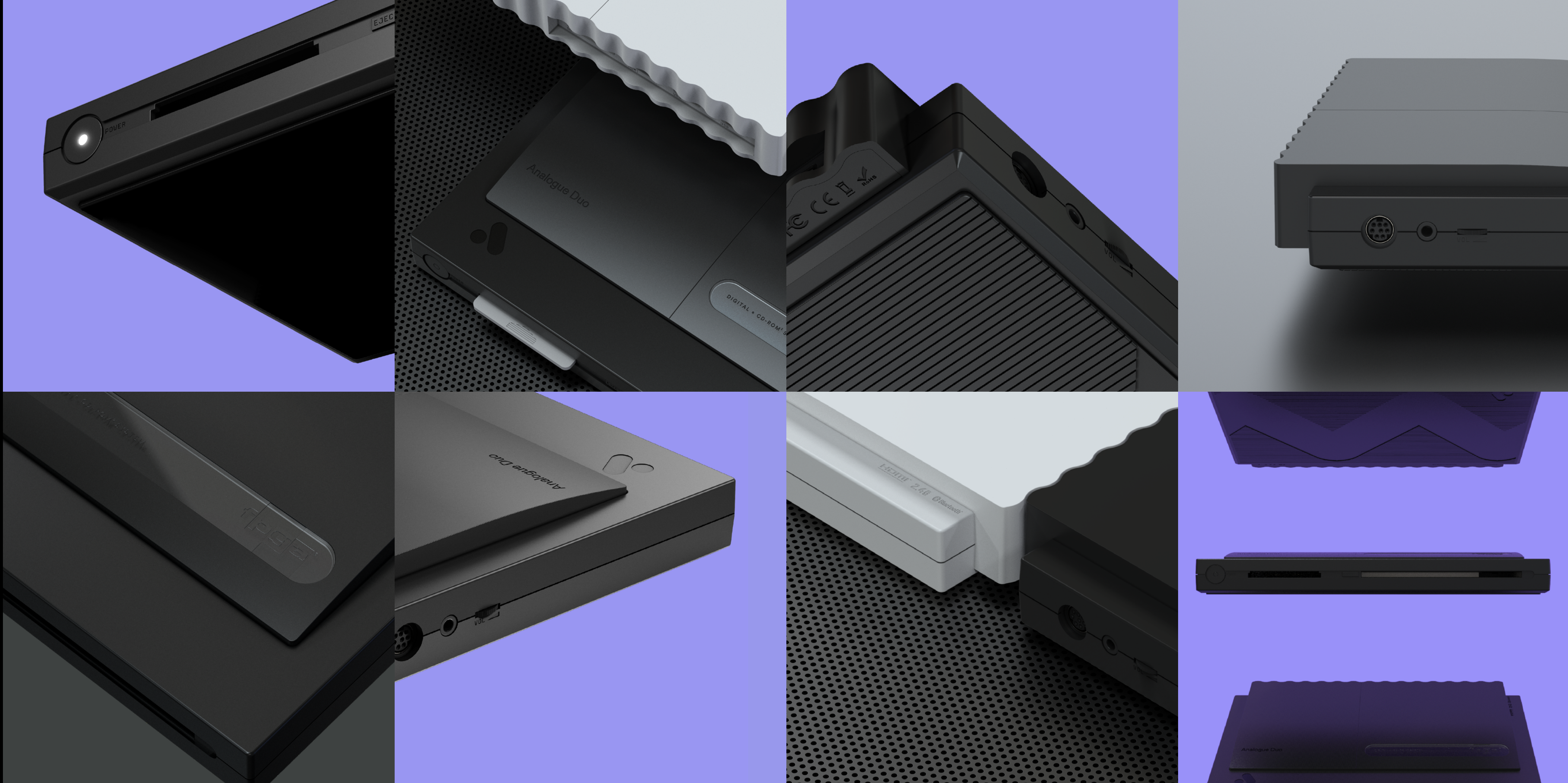
Duo is the ultimate all-in-one NEC video game system. Duo features an original-style cartridge slot, controller port and CD-ROM drive. This means it is compatible with all game formats: Hucards, TurboChips, and CD-ROM. Plus the original hardware and accessories.



Twice the Wireless. Bluetooth. 2.4g.

With Duo, you have the power to choose how to connect. Bluetooth and 2.4g are built right in. Sync up any wireless 8BitDo Bluetooth or 2.4g controller directly to Duo for wireless play. Up to 4 player support. No receivers required. You can even connect controllers directly via the wired USB and an original-style port, too.



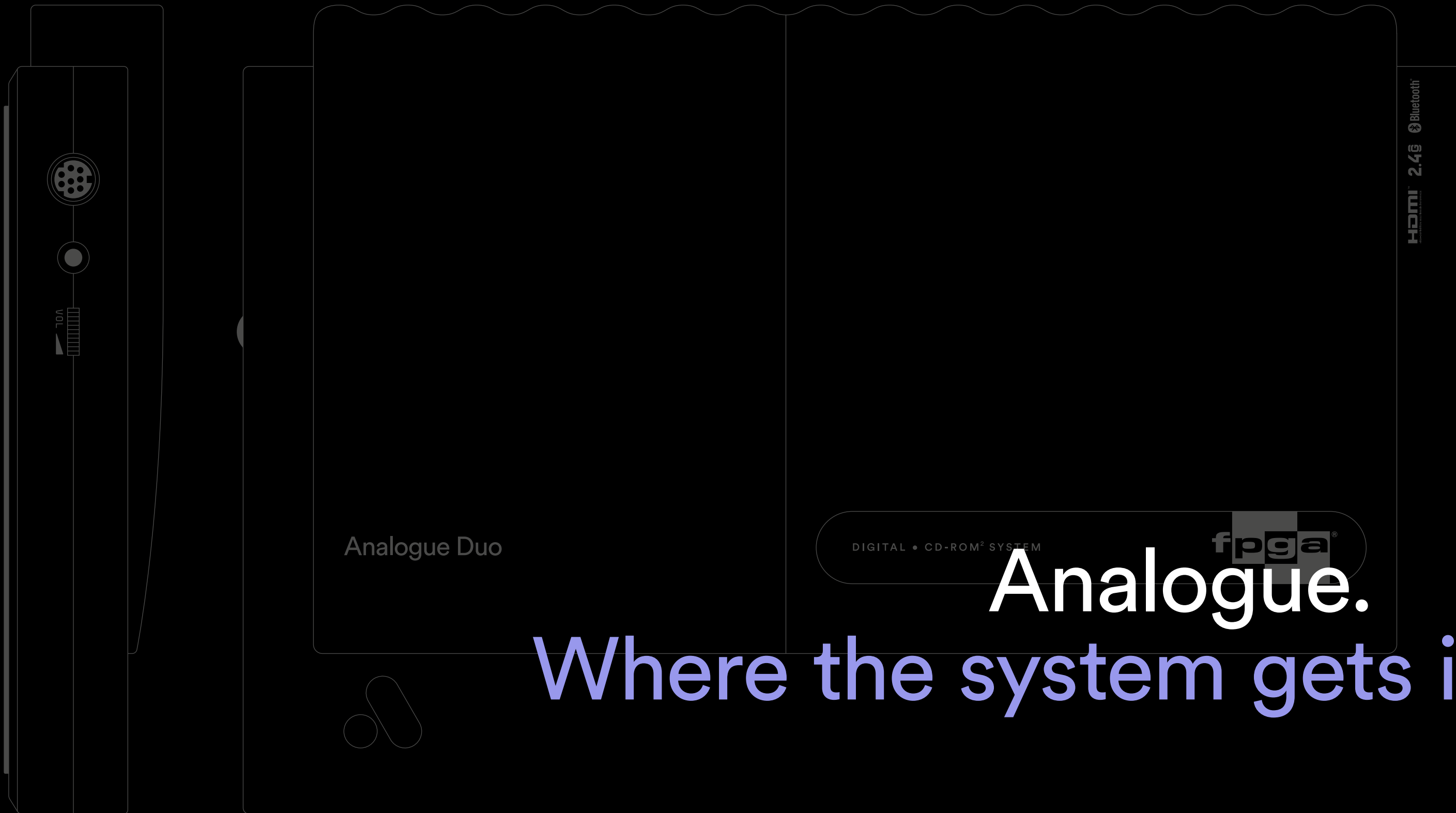


We're preserving history with FPGA hardware. Duo is designed with unparalleled compatibility. The core functionality of each system is engineered directly into an Altera Cyclone V, a sophisticated FPGA. We spent thousands of hours engineering each system via FPGA for absolute accuracy. Unlike the knock off and emulation systems that riddle the market today, you'll be experiencing the entire NEC era free of compromises. Duo is designed to preserve video game history, with the respect it deserves.

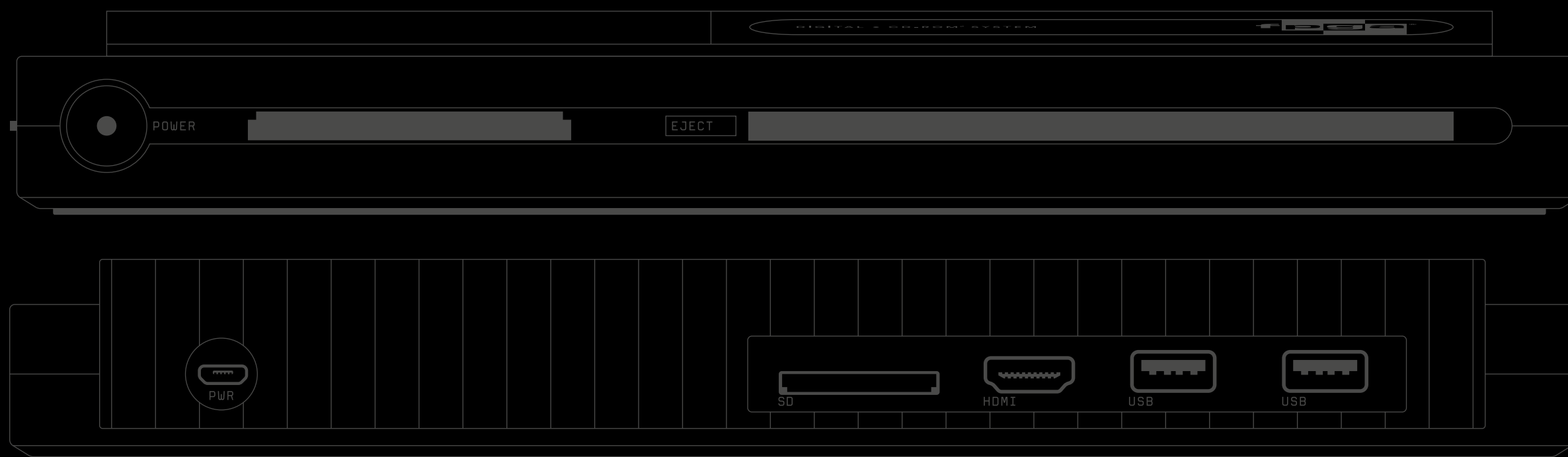




Available in 2 colorways USA & JP.



Analogue.
Where the system gets its energy.



Technical Specifications

Compatibility

- HuCARDS & TURBOCHIP, CD-ROM², SUPER CD-ROM², ARCADE CD-ROM²
- Region Free
- Worldwide Compatibility (PSU: 50-60hz, 100-240 volts)

Video

- HDMI 1080p/720p/480p
- NTSC & PAL Support
- Lag free, zero signal degradation

Audio

- 48KHz 16 bit
- Digital audio via HDMI
- Headphone jack, 3.5mm with volume wheel

Special Features

- Original-style hucard/turbochip cartridge slot
- Original-style TurboGrafx-16 controller port
- CD-ROM drive
- 2x USB for wired controllers and accessories
- SD card firmware updating [via Duo's SD card slot]
- Bluetooth, 2.4g & wired USB support

Other Features

- Scanline options
- Scaler options
- Horizontal position adjust
- Horizontal stretch
- Vertical position stretch & more

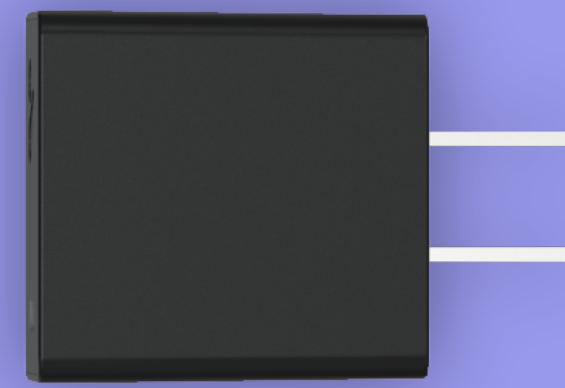
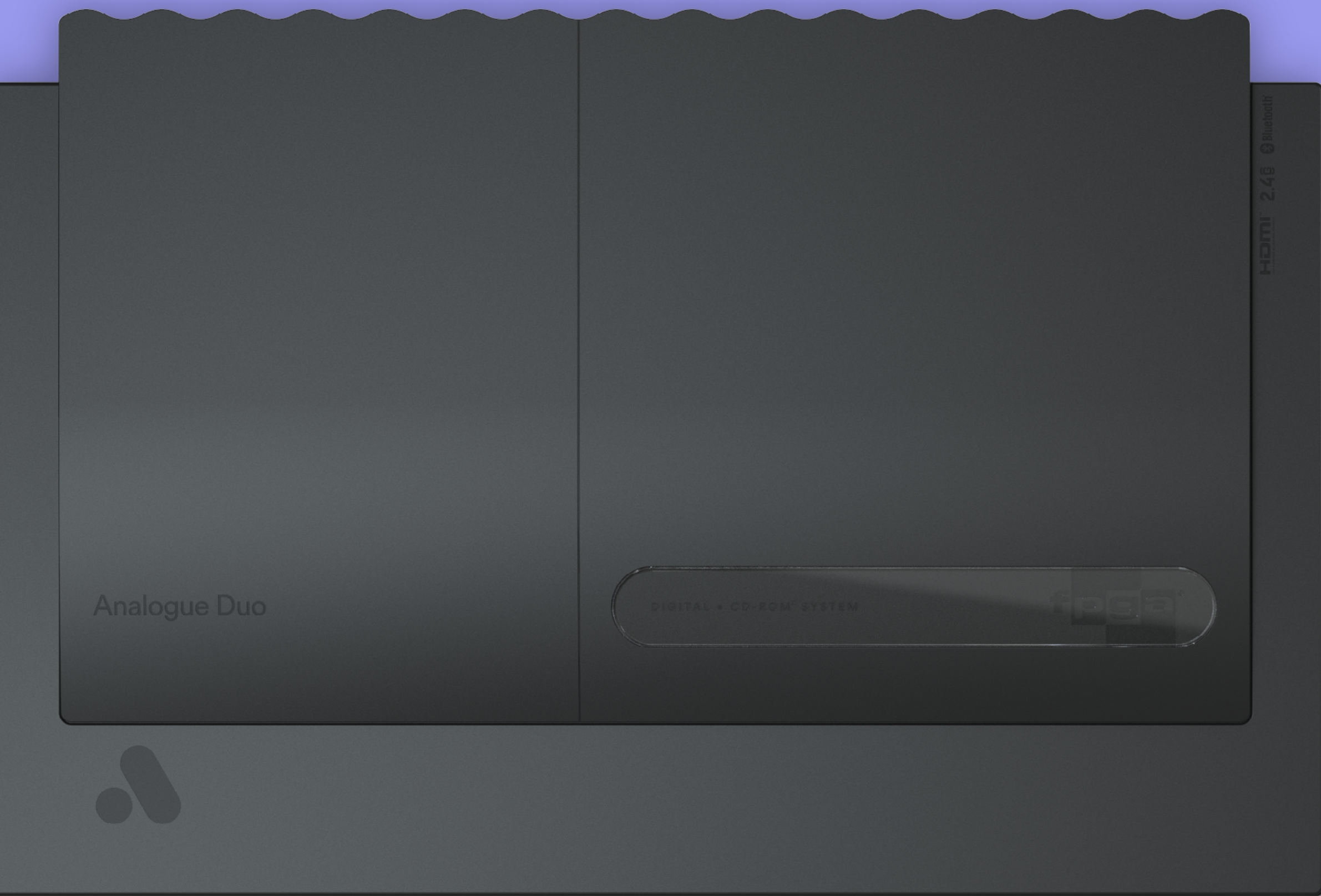
8BitDo TG16 Gamepad w/ 2.4g wireless receiver

- 20hr Battery Life
- Auto sleep mode after 15min
- Lag free
- Includes 2.4g wireless receiver (not required for use with Duo)

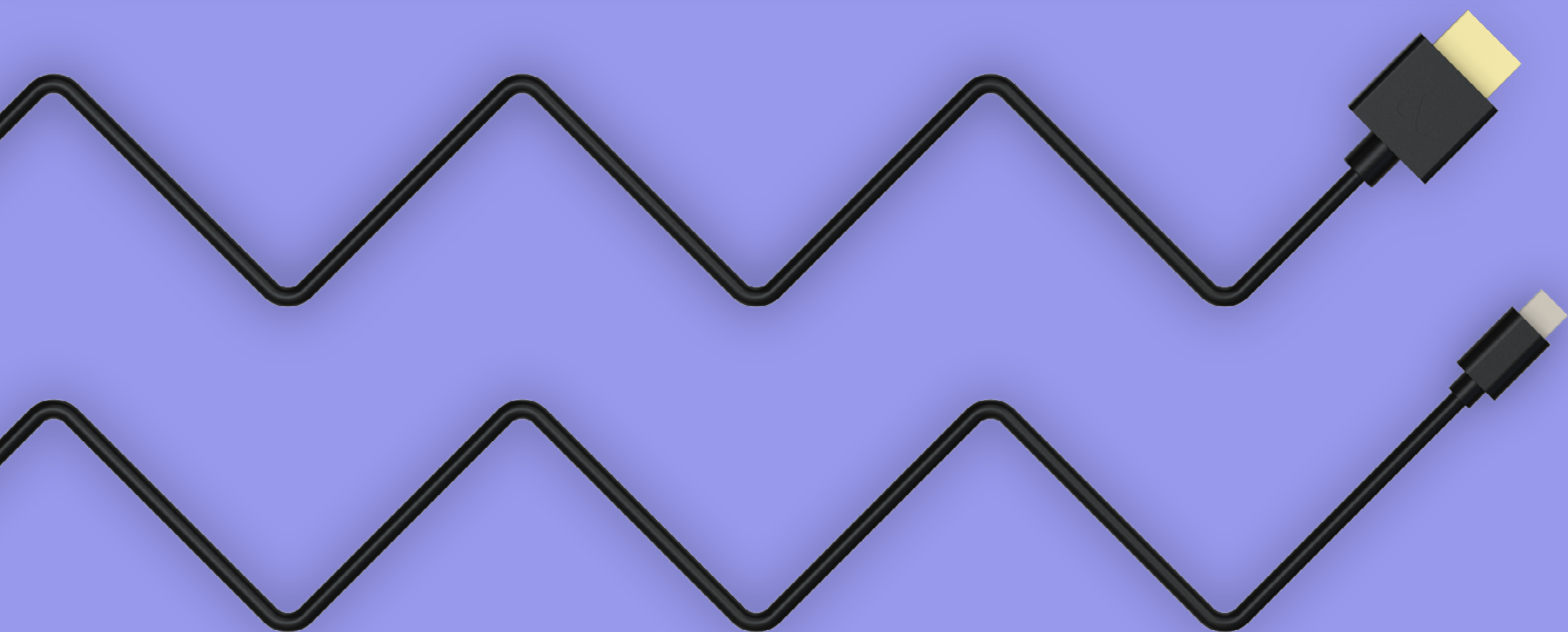
Duo Dimensions

- 138mm length
- 168mm wide
- 47mm high

¹Analogue Duo does not play copyrighted rom files, it plays legacy game cartridges and CDs. ²Analogue Duo is not designed using software emulation. It is designed using a specialty hardware chip called an FPGA, which operates on a transistor level implementation of its functionality. ³Analogue Duo does not operate utilizing any bios files from any other entities. ⁴All trademarks are the property of their respective owners. Games are showcased to illustrate compatibility with Duo. ⁵8BitDo PCE 2.4g controller and 2.4g receiver are not included with Duo and sold separately. Included 2.4g receiver is not required to use with Duo, Duo features built-in wireless 2.4g. ⁶8BitDo PCE 2.4g controller is not manufactured or distributed by Analogue, Inc.



What's in the box?



Analogue Duo
HDMI Cable
USB Cable
Worldwide USB Power Supply
[100-240v, 50/60hz, USA/JPN plug-type]

